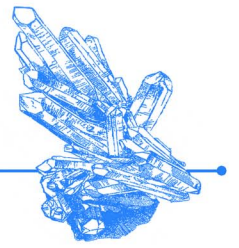


FABRE MINERALS



SAINTE-MARIE-AUX-MINES
27 - 30 June 2019

Barcelona 06/6/2019



Sphalerite - Troya Mine, Spain crystal: 0.6 x 0.5 cm

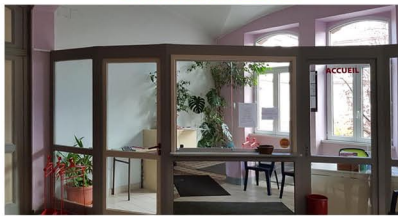
Important news! This year we will quit what has been our spot in recent years and we will exhibit in a different way. Where we were before we had the advantage of its great visibility but the inconvenience that it tied me very much and limited me in my purchases because I had to always be there.

A little further up from where we were, at the end of the stairs and to the right, is what until now was the Reception (Accueil) of the Piscine and that happens to be our new exhibition place. There you will find me or Jordi Deusedes who will be able to immediately connect with me if necessary. So even if you do not see me there I will be there in one way or another. We will also have another large reserved space in which we will have stored many more specimens

What minerals will we have this year?:
Many and very good ones! 😊

Spanish Fluorite
French Fluorite
Rhodochrosite from the Manuelita Mine
Many fine collections
and much more...

ACCUEIL



New location



~~Former Fabre Minerals location~~
entrée rue Osmont
entrance Osmont street



See you in Ste. Marie!

Jordi Fabre



Wulfenite - Red Cloud Mine, USA crystal: 1.6 x 1 cm



JORDI FABRE Arc de Sant Martí 79, local 08032 BARCELONA (SPAIN) ☎ (34) 93 450 44 78
www.fabreminerals.com mail: mineral@fabreminerals.com
www.mineral-forum.com www.minerales.info

